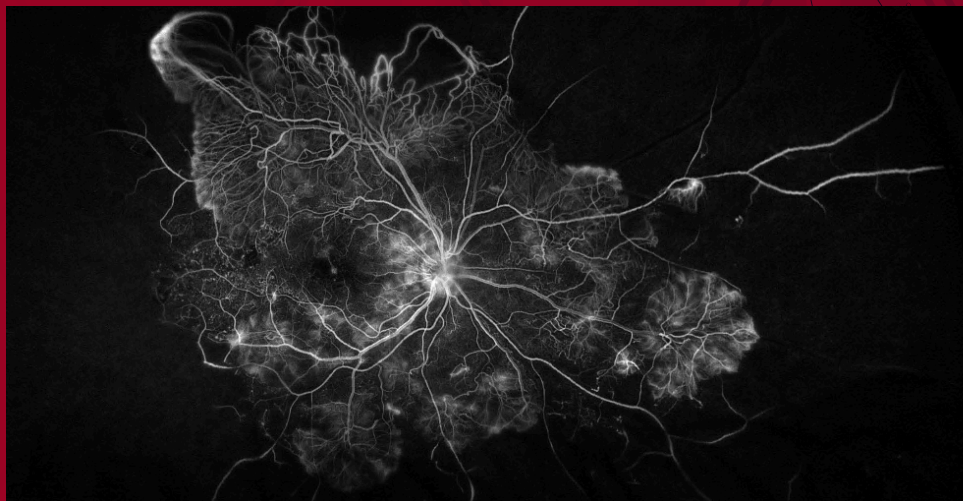


 CONTINUING MEDICAL EDUCATION | CID 2739

Complex Cases and Complications in Ophthalmology



Saturday, September 25, 2021

7 a.m. – 1 p.m.

Wolstein Research Building Auditorium

2103 Cornell Road, Cleveland, OH 44106

2021 Bruner Lecturer:

Donald J. D'Amico, MD

John Milton McLean Professor of Ophthalmology

Chairman, Department of Ophthalmology

Weill Cornell Medical College



PRESENTED BY:



University Hospitals
Eye Institute

SPONSORED BY:



SCHOOL OF MEDICINE
CASE WESTERN RESERVE
UNIVERSITY

PROGRAM AGENDAS

- 7 – 7:55 a.m. **Registration and Breakfast**
- 7:55 – 8 a.m. **Introduction**
Douglas Rhee, MD
- 8 – 9 a.m. **SESSION ONE: ANTERIOR SEGMENT
AND CATARACT SURGERY**
Moderator: Anthony Chung, MD
- 8 – 8:12 a.m. **Formulas for Success:
Minimizing Refractive Surprises**
Linda Ohsie-Bajor, MD
- 8:12 – 8:24 a.m. **Complex Triple Surgeries**
Omar Ahmed, MD
- 8:24 – 8:36 a.m. **Challenges of Teaching Cataract Surgery**
Anthony Chung, MD
- 8:36 – 8:48 a.m. **Glaucoma Tube Placement in Eyes
with Scleral Buckle**
Douglas Rhee, MD
- 8:48 – 9 a.m. **Panel Discussion**
Jonathan Lass, MD, Douglas Rhee, MD
and Yasemin Sozeri, MD
- 9 – 9:30 a.m. **Break/Exhibitors**
- 9:30 – 10:38 a.m. **SESSION TWO: POSTERIOR SEGMENT
AND VITREORETINAL SURGERY**
Moderator: Jose Echegaray, MD
- 9:30 – 9:50 a.m. **Unanswered Questions in Macular Surgery**
Donald D’Amico, MD
- 9:50 – 10:02 a.m. **Concurrent and Delayed RD in Endophthalmitis**
Jose Echegaray, MD
- 10:02 – 10:14 a.m. **Brolucizumab: A Double-Edged Sword**
Shree Kurup, MD
- 10:14 – 10:26 a.m. **Persistent ROP After Bevacizumab Therapy**
Basak Can Ermerak, MD

10:26 – 10:38 a.m.	Panel Discussion Jose Echegaray, MD, Shree Kurup, MD and Faruk Orge, MD
10:38 – 11:08 a.m.	Break/Exhibitors
11:08 – 11:15 a.m.	Introduction of Bruner Lecturer Jose Echegaray, MD
11:15 a.m. – 12 p.m.	Bruner Lecture: Advances and Controversies in the Management of Primary Retinal Detachment Donald D’Amico, MD
12 – 12:48 p.m.	SESSION THREE: NEURO-OPHTHALMOLOGY AND PEDIATRIC OPHTHALMOLOGY Moderator: Anthony Chung, MD
12 – 12:12 p.m.	Never Miss Neuro-Ophthalmological Diagnoses Michael Morgan, MD, PhD
12:12 – 12:24 p.m.	Challenging Strabismus Cases Maryo Kohen, MD
12:24 – 12:36 p.m.	Utilization of UBM in Clinical Practice Faruk Orge, MD
12:36 – 12:48 p.m.	Panel Discussion Basak Can Ermerak, MD, Jose Echegaray, MD and Linda Ohsie-Bajor, MD
12:48 – 12:50 p.m.	Closing Remarks/Adjourn Douglas Rhee, MD

POLICY DISCLOSURE

The policy of Case Western Reserve University School of Medicine CME Program requires that the Activity Director, planning committee members and all activity faculty (that is, anyone in a position to control the content of the education activity) disclose to the activity participants all relevant financial relationships with commercial interests. Disclosure will be made to activity participants prior to commencement of the activity. Case Western Reserve University School of Medicine CME Program also requires that faculty make clinical recommendations based on the best available scientific evidence and that faculty identify any discussion of “off-label” or investigational use of pharmaceutical products or medical devices.

This program will be supported by grants from industry. A complete list of supporters will be provided in the syllabus materials distributed at the meeting. Acceptance of funding in support of this program does not constitute endorsement of any product or manufacturer.

SPEAKERS

2021 BRUNER LECTURER

Donald J. D'Amico, MD

John Milton McLean Professor of Ophthalmology
Chairman, Department of Ophthalmology,
Weill Cornell Medical College

SPEAKERS

Basak Can Ermerak, MD

University Hospitals Eye Institute
Assistant Professor of Ophthalmology,
Case Western Reserve University

Anthony Chung, MD

University Hospitals Eye Institute
Assistant Professor of Ophthalmology,
Case Western Reserve University

Jose J. Echegaray, MD

University Hospitals Eye Institute
Assistant Professor of Ophthalmology,
Case Western Reserve University

Maryo Kohen, MD

University Hospitals Eye Institute
Assistant Professor of Ophthalmology,
Case Western Reserve University

Shree Kurup, MD

Director, Retina Service
University Hospitals Eye Institute
Professor of Ophthalmology,
Case Western Reserve University

Jonathan Lass, MD

Anterior Segment Diseases and Surgery,
University Hospitals Eye Institute
Charles I Thomas Professor and Vice Chair
for Academic Affairs,
Case Western Reserve University

Michael Morgan, MD, PhD

Director, Neuro-Ophthalmology Service,
University Hospitals Eye Institute
Assistant Professor of Ophthalmology,
Case Western Reserve University

Linda Ohsie-Bajor, MD

University Hospitals Eye Institute
Assistant Professor of Ophthalmology,
Case Western Reserve University

Ahmed Omar, MD

University Hospitals Eye Institute
Assistant Professor of Ophthalmology,
Case Western Reserve University

Faruk Orge, MD

Director, Center for Pediatric
Ophthalmology and Adult Strabismus,
University Hospitals Rainbow
Babies & Children's Hospital
Professor of Ophthalmology,
Case Western Reserve University

Douglas J. Rhee, MD

Chairman, University Hospitals Eye Institute
Professor of Ophthalmology,
Case Western Reserve University

Yasemin Sozeri, MD

University Hospitals Eye Institute
Assistant Professor of Ophthalmology,
Case Western Reserve University

Complex Cases and Complications in Ophthalmology

REGISTRATION FORM

EVENT FEE

\$45.00

(Residents, fellows and medical students are free)

REGISTRATION

Register online at cwru.cloud-cme.com/Ophthalmology2021

OVERVIEW

This meeting will showcase a variety of surgical challenges and complications in ophthalmology. The cases will be presented by University Hospitals Cleveland Medical Center/Case Western Reserve University faculty and residents, highlighting techniques and considerations for the most complicated ophthalmic conditions. The event will be headlined with the Bruner Lecture to be given by Donald J. D'Amico, MD, Professor and Chairman of Ophthalmology at Weill Cornell Medical College.

LEARNING OBJECTIVES

- Evaluate and manage a variety of anterior segment surgeries
- Evaluate and manage a variety of posterior segment surgeries
- Describe the advanced uses of ophthalmic imaging

INTENDED AUDIENCE

Ophthalmologists, ophthalmology residents, fellows and medical students

ACCREDITATION STATEMENT

Case Western Reserve University School of Medicine is accredited by the Accreditation Council for Continuing Medical Education to provide continuing medical education for physicians.

Case Western Reserve University School of Medicine designates this live activity for a maximum of 3.75 *AMA PRA Category 1 Credits™*. Physicians should claim only the credits commensurate with the extent of their participation in the activity.

QUESTIONS?

Contact the CME Program at medcme@case.edu or 216-983-1239.